

DOM 4000E Microscope Technical Data

Microscope System

Eyepieces	10/22B high eyepoint ocular help receive larger FOV
Binoculars	0~210° Inclinable extended tube
PD adjustable range	55mm-75mm
Diopter Range	±7
Magnifications	ZOOM magnification
Zoom magnifications	3.6x-23.3x
Objective Lens	200mm-550mm Auto-focusing
Diameter of FOV(*)	132mm-9.7mm

Illumination System

Light source	Built-in high-reliability medical LED light source, with continuously adjustable luminance, life span over 60,000 hours
Minimum illumination intensity (f=250)	≥80000lx
Diameter of illumination spot	≥60mm
Color Filter	Yellow, Green
Light spot size	light spot size adjustable
Color temperature	5000K, closer to natural light
Caries mode	Caries detection

Support System

Electromagnetic lock	Three-joint electromagnetic system
Bracket type	Suspension-type bracket
Big arm	570mm, ±165° rotation
Spring arm	850mm, ±100° rotation, vertical movement ±300mm
Maximum arm spread	1760mm
Base size	580mm*580mm
Surface Material	Protected with antibacterial nano silver-ion coating to ensure no cross contamination

Built-in 4K camera system

Video definition	3840x2160 (4K, switchable to 2.7K, 1440P, 1080P, 960P and 720P)
Video frame rate	60fps@4k
Storage medium	USB Drive (128G)
Screencasting Program	Playback video and picture files online
Shooting support mode	JPG/RAW (image format), MP4 (video)
Foot pedal	Take photo and video
Control mode	Button, mouse and foot pedal

Electrical Specifications

Power Supply	220V
Frequency	50Hz
Input Power	120VA
Fuses	T1.OAL 250V(two pieces)

DOM
4000E



DESIGNED FOR
DEMANDING
TREATMENT

CE FDA
www.bondent.eu

 Bondent

Precise, Flexible, Comfortable

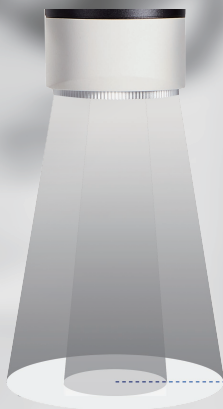
One-hand operation

Large zoom objective, more view of operation field

The WD200-550MM zoom objective lens has a large and variable range of 350mm, which fully meets the needs of different diagnosis and treatment, so that the operator can easily and quickly switch the focal plane during treatment, and simultaneously allowing a clearer view.

Electronic focus

- Electronic focus assists you during surgery for increased efficiency and effectiveness
- Also makes operation easier and more convenient



Spot size continuously adjustable

Spot size can be adjusted as needed to make the treatment more focused and less disturbed.



200mm

550mm

le, and Efficient



3-part electromagnetic lock-in position

Electromagnetic brake allows precise positioning of microscope, allowing it to stop at any desired position.



Multi-functional control handle

Ergonomic design for easy control of lens positioning, focusing, brightness adjustments, photography and recording functions.

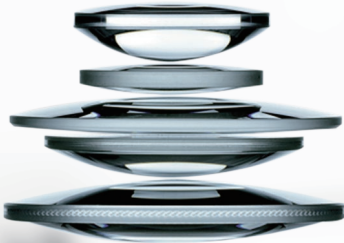


Precision Elevati



Ultra-quality optics using German technology during multi-layer coating process.

New optical coating process and apochromatic optical structure



Unobstructed field of view Less repositioning during surgery

FOV: 132mm to 9.7mm field of view diameter

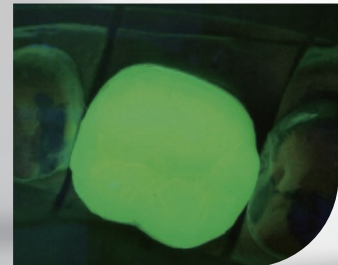
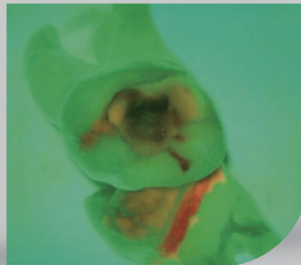


on Vision, Exceptional Clarity ng Optical Excellence



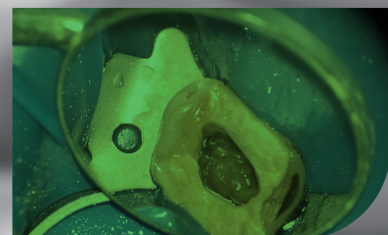
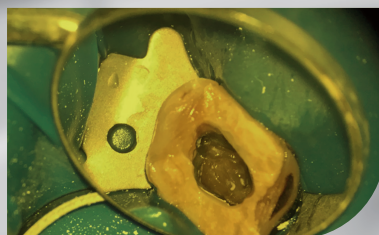
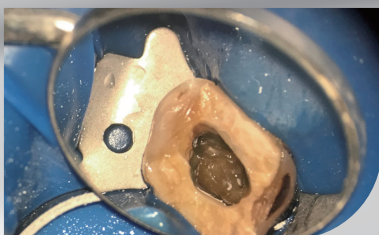
📌 Caries detection

Help you identify caries margins to allow preservation of as much healthy tooth substance as possible



📌 Integrated Yellow & Green Filters

- Yellow filter-To prevent the resin material from curing too quickly during use
- Thereby extending the operating time
- Orange filter-Observe delicate neurovascular vessels within the surgical environment



4K image, beyond imagination



📷 Built-in 4K ultra HD camera system

Built-in upgraded 4K image system, based on SONY*'s high-end image sensor, supports 4K video recording, and the maximum resolution of static images is 12 million pixels, which is 4 times that of the traditional 1080P high-definition image system.

High-definition images record every moment of the doctor's fine operation, which is more conducive to the dissemination of knowledge, doctor-patient communication, and can also improve the professional reputation of doctors.

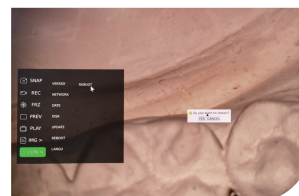
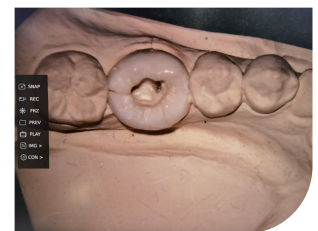
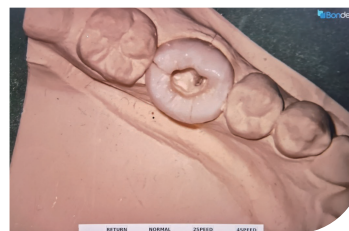
1 More flexible control modes

- Wireless Bluetooth footpedal
- Wireless mouse
- Button on handle



2 Computer System Display Upgrade

- Various personalized settings
- The fine and digital operation function of the camera can measure and compare pre-op and post-op pictures.



3 Powerful imaging features are helpful for

- Doctor-patient communication
- Academic communication
- Remote medical treatment

*SONY is a registered trademark of Sony Group Corporation