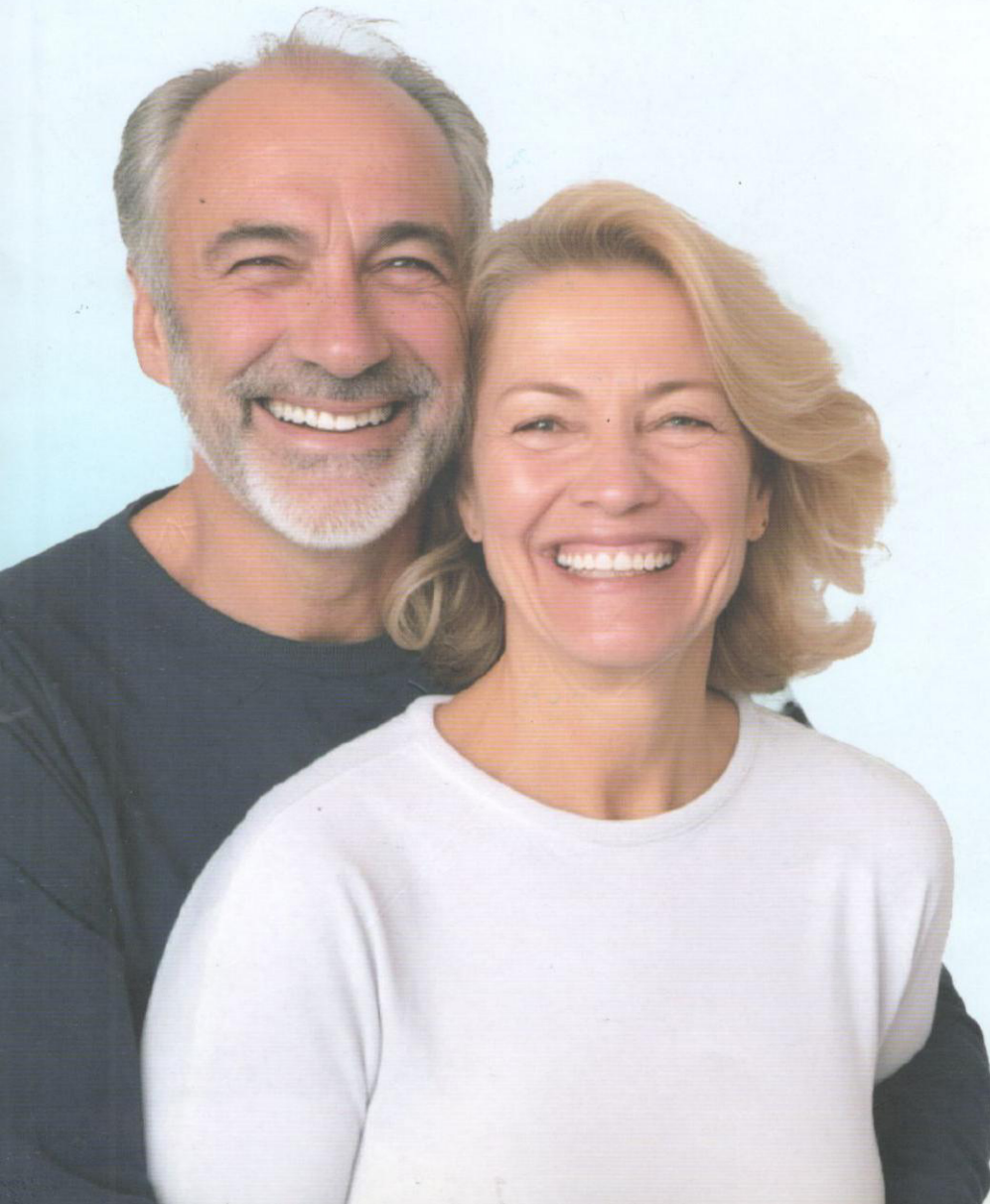


# C-ROOT

*Make Endo Great*



# C-Root Dental Medical

C-Root is committed to advancing the field of root canal treatment by spearheading the research, development, and global production of state-of-the-art bio-materials and cutting-edge devices.

## C-Root SP Bioceramic Root Canal Sealer

### Patented Strontium Silicate

C-Root SP is a premixed and injectable bioceramic Root Canal Sealer with a patented and innovative strontium silicate formula, specifically designed to seal the complexities within the root canal system during obturation. This innovative sealer not only promotes effective healing and mineralization but also ensures safe and effective permanent root canal filling and sealing.

#### Composition

Strontium Silicate, Zirconia, Calcium Phosphate, and Calcium Hydroxide.

#### Function

Root Canal Sealing and Permanent Filling. It is suitable for lateral condensation/compaction technique, single cone obturation technique, and vertical condensation technique.

#### Indications

Permanent filling of root canal after it has been cleaned and disinfected properly.

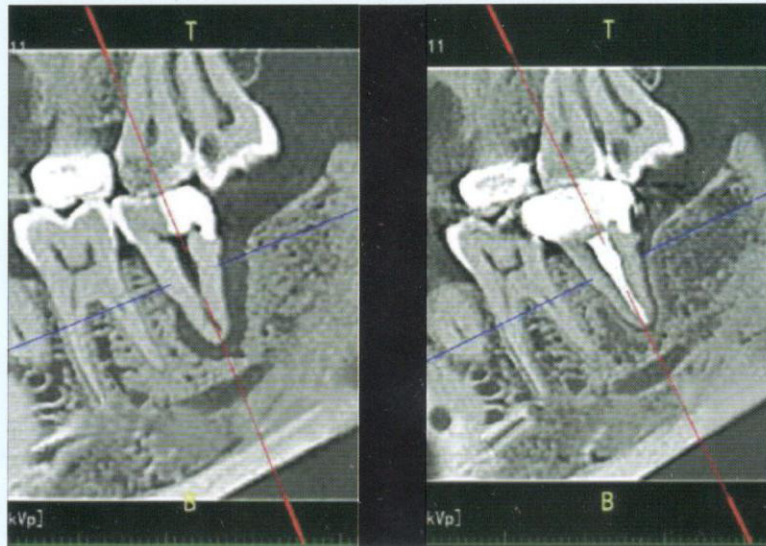


	Your Current System	C-Root SP
Biocompatible and osteogenic	?	✓
Rapid periapical healing	?	✓
Consistent flow	?	✓
Construct strong chemical bonding between sealer material and dentin	?	✓
Mild post-op reaction	?	✓
Affordability	?	✓
High antibacterial(pH > 12)	?	✓
Zero shrinking	?	✓
Successful sealing	?	✓
Enhanced ability to promote bone healing	?	✓
Strontium element can promote osteogenesis as well as angiogenesis	?	✓
Anti-inflammatory, greatly inhibiting inflammatory factors such as TNF-α or PGE2	?	✓

# Advantages

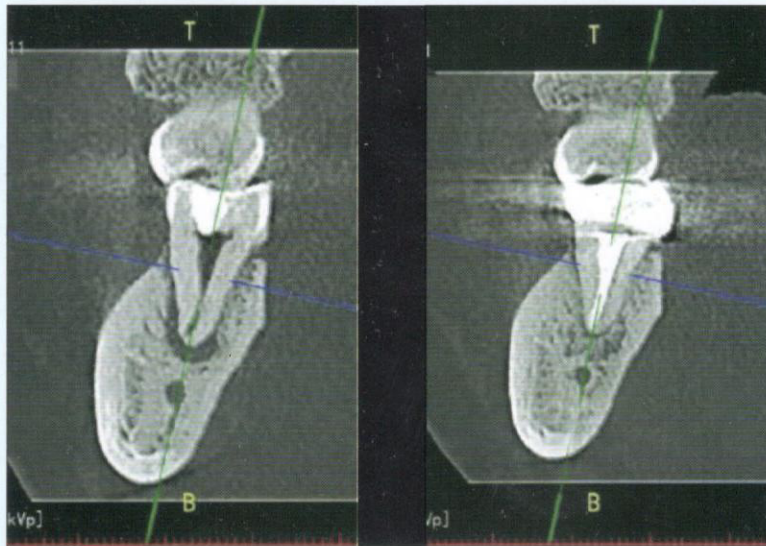
## 1. Outstanding osteogenic and apical healing capacity

For cases with apical lesions, C-Root SP is unparalleled in accelerating bone healing. Its ability to create a strong apical seal, coupled with the osteogenic potential of strontium silicate, promotes long-term healing and ensures successful outcomes.



immediate post-op

7 months post-op



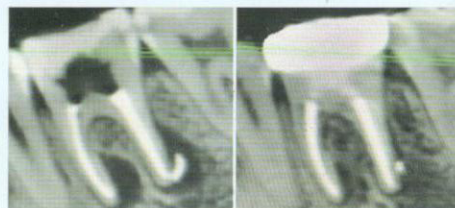
immediate post-op

7 months post-op

By Dr.Liu

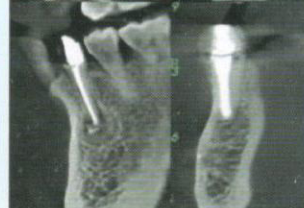


immediate post-op & 12 months post-op By Dr.Huang



immediate post-op & 3 months post-op

By Dr.Liu



immediate post-op & 3 months post-op

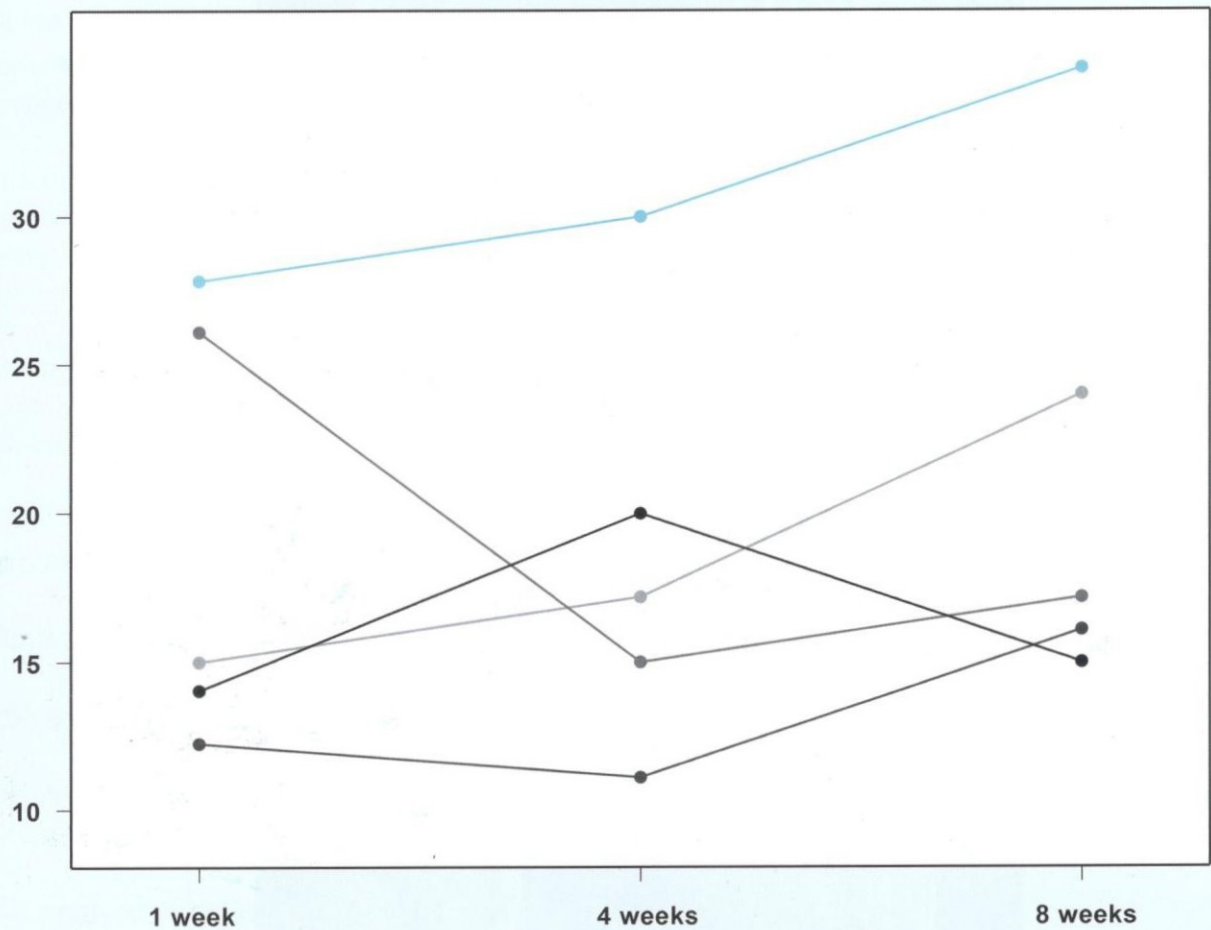
## 2.Highly antibacterial properties

C-Root SP, with its highly alkaline nature (pH > 12), exhibits strong antibacterial properties. A recent study demonstrated that C-Root SP kills a higher percentage of bacterial cells compared to other dental sealers, showing a progressive increase in effectiveness over time.

### Percentage Of Dead Bacterial Cell Volume Over Time

Y Percentage of Dead Bacterial Cell Volume (%) by X

■ C-Root® SP ■ BC Sealer™ ■ AH Plus® Bioceramic Sealer ■ Bio-C® Root ■ BioRoot Flow™



Source: Mehdiyeva, V.J.\*, Hieawy, A., & Shen, Y. (2024). Antibacterial Effects of Bioceramic Sealers in an Ex Vivo Model. Faculty of Dentistry, The University of British Columbia, Vancouver, Canada. Poster.

“

C-Root exhibits time-dependent increases in cell proliferation and significantly higher levels of osteogenic gene expression compared to other products, suggesting its potential as an excellent alternative for promoting bone formation and regenerative effects in root canal-filling material.

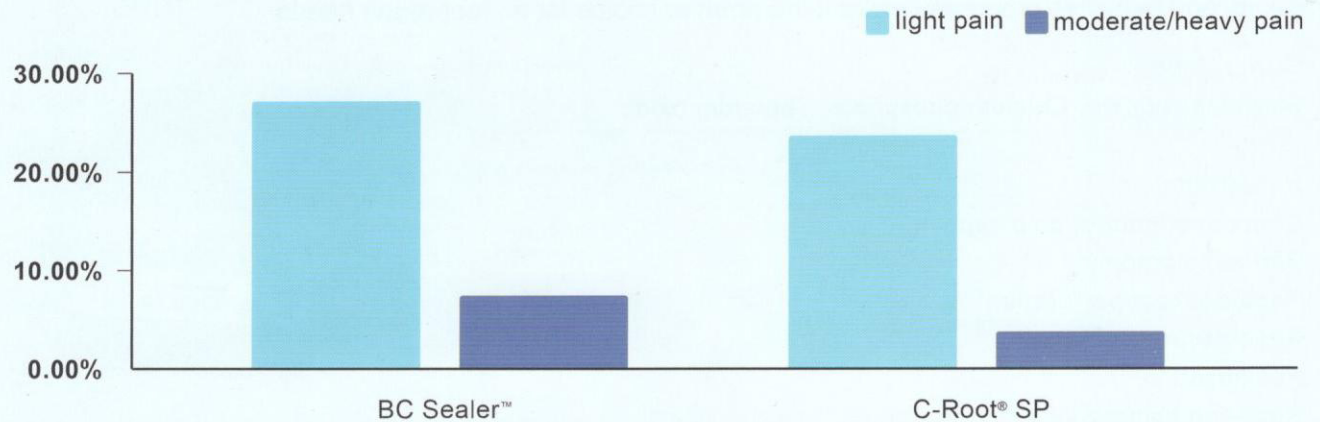
—DOI: 10.1177/0300060519894801

C-Root SP demonstrates favourable attributes as a root canal sealer, including effective apical sealing ability, comparable bond strength, fracture resistance, strong antibacterial effects, and good biocompatibility. These findings suggest that C-Root SP is a reliable and promising choice for root canal procedures.

—DOI: 10.19538/j.kq.2022.03.010

### 3. Superior biocompatibility

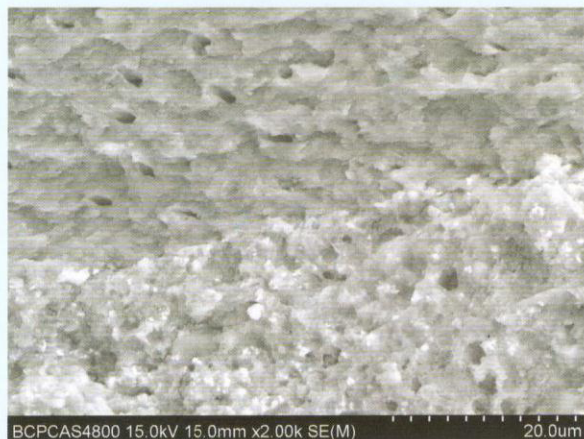
C-Root SP, utilizing strontium elements instead of calcium silicate, offers strong biocompatibility and helps alleviate inflammation and pain. A recent study found that C-Root SP, compared with other brands, postoperative pain is significantly reduced with single cone obturation method.



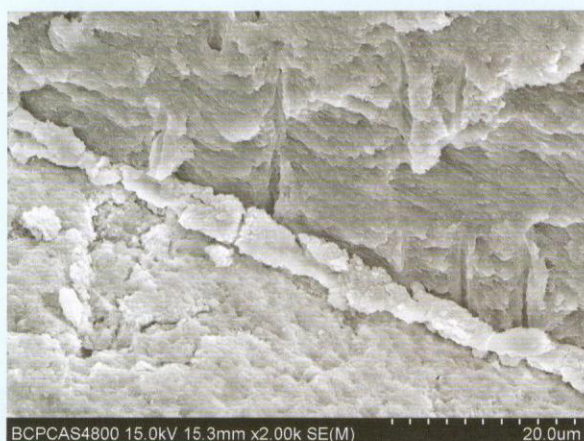
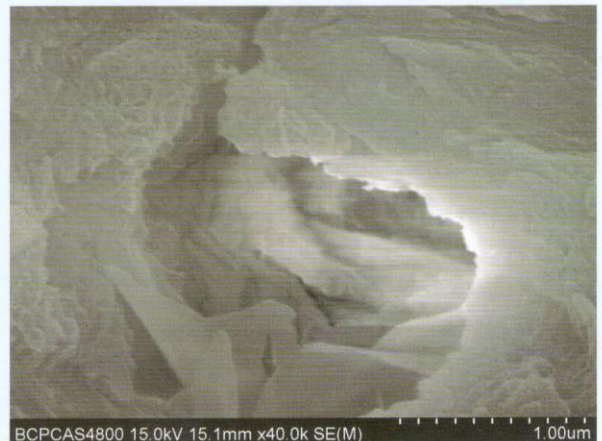
Effects of sealers extrusion on postoperative pain rate after root filling (painful cases with single cone technique over total cases) 1

### 4. Excellent flow and sealable

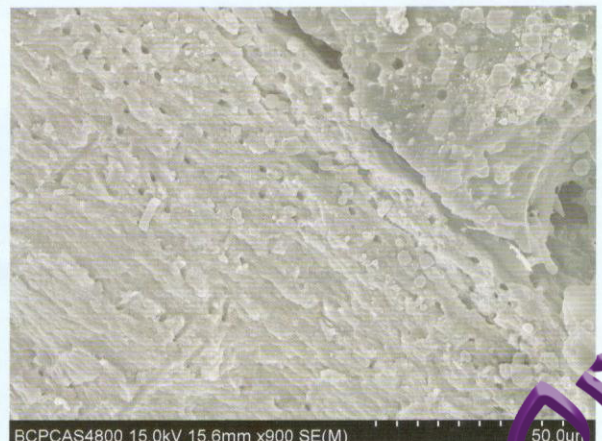
C-Root SP particles, being small and hydrophilic, can navigate the entire canal anatomy, including small lateral canals, fins, and cul-de-sacs. They can penetrate dentin tubules, promote remineralization with strontium substitution, bond to dentin and obturation materials to minimize voids, and effectively eliminate microbes, preventing their recurrence.



C-Root® SP



BC Sealer™



1: Lei, G., BIAN, M., Li, N., Yan, M., Zhou, L., Li, Z., & Wu, J. (2023). Comparison of apical extrusion rate and postobturation pain experience of C-Root SP and iRoot SP bioceramic root sealers. Oral Biomedicine, 14(1), 29–34. <https://doi.org/10.3969/j.issn.1674-8603.2023.01.006>



## Contact Us Now



C-Root SP  
Clinical Cases



C-Root SP  
Journals



Facebook



Instagram



Website



WhatsApp



Youtube

+1 689-276-1006

info@crootusa.com

crootdental.com

C-Root Dental Medical Devices Co., LTD

36 Floor, 1250 Broadway, New York, NY 10001, USA

